

# "160-2" Stainless Steel Enclosed Work Tables

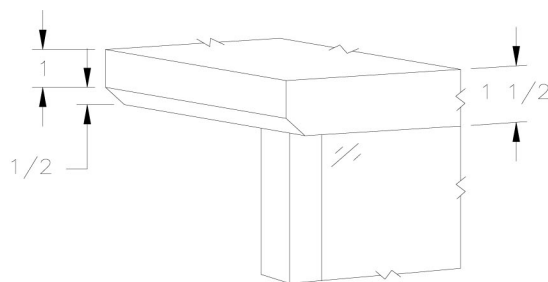
w/ Stainless Steel Base, Panels and Undershelf  
w/ Sliding Doors



16 GAUGE TOP			
24"WIDE	Qty	30"WIDE	Qty
160-11		160-16	
160-12		160-17	
160-13		160-18	
160-14		160-19	
160-15		160-20	

## FEATURES:

- \* 16 Gauge Stainless Steel Top  
Type 300 stainless steel with # 3 polish, satin finish
- \* Top is **Sound Deadened**
- \* Reinforced with 1"x2" channel running entire length of table
- \* 1 1/2" **Stallion Edge** on front and rear with side edges 90 degree bend down for table line-up
- \* Stainless Steel Top, Cabinet and Undershelf  
Type 300 stainless steel with # 3 polish, satin finish
- \* Undershelf is secured in a fixed position, 14 7/8" above floor
- \* Adjustable bullet feet
- \* Shipped Standard Welded Set-Up
- \* Optional drawers, casters, pot racks, etc. available
- \* All models are approved by the National Sanitation Foundation and the U.S. Department of Agriculture.



STALLION  
SAFETY  
EDGE

## CONSTRUCTION:

Top: Stainless Steel Tops are TIG welded, Exposed welds are polished to match adjacent surface.

## MATERIAL:

Top: 16 gauge stainless steel  
Type 300 stainless steel with # 3 polish, satin finish

Doors: 16 gauge stainless steel  
Type 300 stainless steel with # 3 polish, satin finish

Shelf: 18 gauge type 300 stainless steel # 3 polish, satin finish  
\*\* 6 ft. table only, 16 gauge type 300 stainless steel # 3 polish, satin finish

Legs: 1 1/2" Square O.D., 16 gauge type 300 tubular stainless steel # 3 polish, satin finish

Panels: 22 gauge stainless steel  
Type 300 stainless steel with # 3 polish, satin finish

Feet: 1" adjustable stainless steel feet

## OPTIONAL ACCESSORIES

	MODEL #	Qty
CASTERS		
OVERSHELVES		
POT RACK		
SINKS		
INTERMEDIATE SHELF		
S/S BUN PAN RACK		



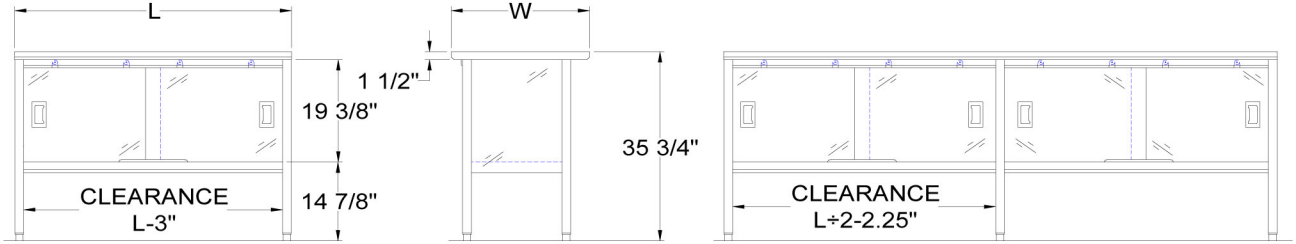
**R.W. Rogers Company**  
610 S. Kirk Rd., St. Charles, IL 60174  
Phone: 630-377-9033 \* Fax: 630-377-2073  
<http://www.rwrogerscompany.com>



# DETAILED SPECIFICATIONS



30" and 36" wide Tables 48" and 60" long are supplied with three channels, two the length of table and one centered front to back. All other 30" and 36" wide Tables over 72" are supplied with four channels, two length of Table and two front to back evenly spaced between two length channels.



Shipped Welded Set-Up  
 Units 7 ft. and larger are furnished with six legs.  
 All dimensions are typical.  
 Tolerance +/- .500".

Finished size of undershelf.  
 Shelf length = length minus 4.875"  
 Shelf width = width minus 4.25"

## 16 GAUGE TOP

L	24" WIDE	WT.	30" WIDE	WT.
48	160-11	116	160-16	130
60	160-12	135	160-17	153
72	160-13	168	160-18	183
96	160-14	207	160-19	230
120	160-15	244	160-20	280



**R.W. Rogers Company**  
 610 S. Kirk Rd., St. Charles, IL 60174  
 Phone: 630-377-9033 \* Fax: 630-377-2073  
<http://www.rwrogerscompany.com>

