

# "160-4" Stainless Steel Enclosed Work Tables

w/ Stainless Steel Base, Panels and Undershelf  
w/ Sliding Doors

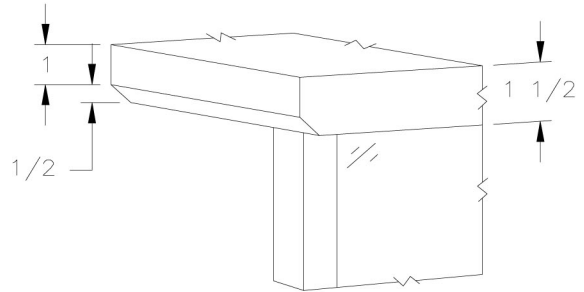
w/ 6" Riser



16 GAUGE TOP			
24"WIDE	Qty	30"WIDE	Qty
160-31		160-36	
160-32		160-37	
160-33		160-38	
160-33A		160-38A	
160-34		160-39	
160-34A		160-39A	
160-35		160-40	

## FEATURES:

- \* 16 Gauge Stainless Steel Top  
Type 300 stainless steel with # 3 polish, satin finish
- \* Top is **Sound Deadened**
- \* Reinforced with 1"x2" channel running entire length of table
- \* 1 1/2" **Stallion Edge** on front and rear with  
side edges 90 degree bend down for table line-up
- \* Stainless Steel Top, Cabinet and Undershelf  
Type 300 stainless steel with # 3 polish, satin finish
- \* Undershelf is secured in a fixed position, 14 7/8" above floor
- \* Adjustable bullet feet
- \* Shipped Standard Welded Set-Up
- \* Optional drawers, casters, pot racks, etc. available
- \* All models are approved by the National Sanitation Foundation and the U.S. Department of Agriculture.



STALLION  
SAFETY  
EDGE

## CONSTRUCTION:

Top: Stainless Steel Tops are TIG welded, Exposed welds are polished to match adjacent surface.

## MATERIAL:

Top: 16 gauge stainless steel  
Type 300 stainless steel with # 3 polish, satin finish

Doors: 16 gauge stainless steel  
Type 300 stainless steel with # 3 polish, satin finish

Shelf: 18 gauge type 300 stainless steel # 3 polish, satin finish  
\*\* 6 ft. table only, 16 gauge type 300 stainless steel  
# 3 polish, satin finish

Legs: 1 1/2" Square O.D., 16 gauge type 300 tubular stainless steel  
# 3 polish, satin finish

Panels: 22 gauge stainless steel  
Type 300 stainless steel with # 3 polish, satin finish

Feet: 1" adjustable stainless steel feet

## OPTIONAL ACCESSORIES

	MODEL #	Qty
ELECTRICAL OUTLET CUTOUT		
CASTERS		
OVERSHELVES		
POT RACK		
SINKS		
INTERMEDIATE SHELF		
S/S BUN PAN RACK		

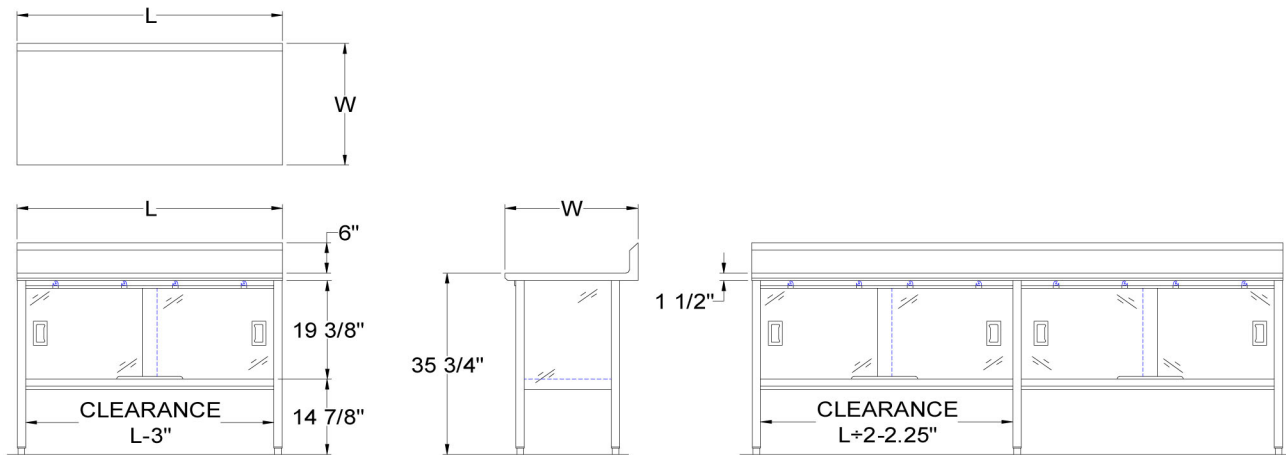


**R.W. Rogers Company**

610 S. Kirk Rd., St. Charles, IL 60174  
Phone: 630-377-9033 \* Fax: 630-377-2073  
<http://www.rwrogerscompany.com>



# DETAILED SPECIFICATIONS



Shipped Welded Set-Up

Units 7 ft. and larger are furnished with six legs.

All dimensions are typical.

Tolerance +/- .500".

Finished size of undershelf.

Shelf length = length minus 4.875"

Shelf width = width minus 4.25"

## 16 GAUGE TOP

L	24" WIDE	WT.	30" WIDE	WT.
48	160-31	116	160-36	136
60	160-32	135	160-37	153
72	160-33	163	160-38	183
84	160-33A	287	160-38A	295
96	160-34	207	160-39	230
108	160-34A	357	160-39A	367
120	160-35	248	160-40	276



**R.W. Rogers Company**  
 610 S. Kirk Rd., St. Charles, IL 60174  
 Phone: 630-377-9033 \* Fax: 630-377-2073  
<http://www.rwrogerscompany.com>

