

"180-4" Stainless Steel Enclosed Deli Tables

w/ Stainless Steel Base, Panels and Undershelf
w/ Sliding Doors

w/ 6" Riser

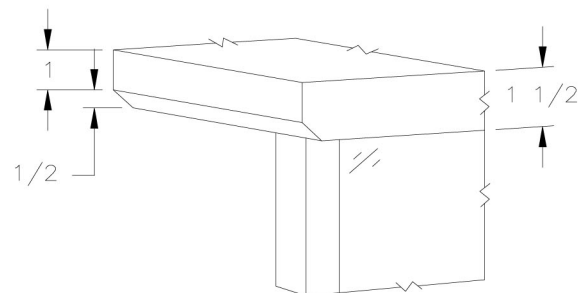


w/ Electrical Outlet Cutout & Cutting Board Storage Slides

16 GAUGE TOP			
24"WIDE	Qty	30"WIDE	Qty
180-31		180-36	
180-32		180-37	
180-33		180-38	
180-33A		180-38A	
180-34		180-39	
180-34A		180-39A	
180-35		180-40	

FEATURES:

- * 16 Gauge Stainless Steel Top
Type 300 stainless steel with # 3 polish, satin finish
- * Top is **Sound Deadened**
- * Reinforced with 1"x2" channel running entire length of table
- * 1 1/2" **Stallion Edge** on front and rear with side edges 90 degree bend down for table line-up
- * Stainless Steel Top, Cabinet and Undershelf
Type 300 stainless steel with # 3 polish, satin finish
- * Undershelf is secured in a fixed position, 14 7/8" above floor
- * Adjustable bullet feet
- * Shipped Standard Welded Set-Up
- * Optional drawers, casters, pot racks, etc. available
- * All models are approved by the National Sanitation Foundation and the U.S. Department of Agriculture.



STALLION
SAFETY
EDGE

CONSTRUCTION:

Top: Stainless Steel Tops are TIG welded, Exposed welds are polished to match adjacent surface.

MATERIAL:

Top: 16 gauge stainless steel
Type 300 stainless steel with # 3 polish, satin finish

Doors: 16 gauge stainless steel
Type 300 stainless steel with # 3 polish, satin finish

Shelf: 18 gauge type 300 stainless steel # 3 polish, satin finish
** 6 ft. table only, 16 gauge type 300 stainless steel
3 polish, satin finish

Legs: 1 1/2" Square O.D., 16 gauge type 300 tubular stainless steel
3 polish, satin finish

Panels: 22 gauge stainless steel
Type 300 stainless steel with # 3 polish, satin finish

Feet: 1" adjustable stainless steel feet

OPTIONAL ACCESSORIES

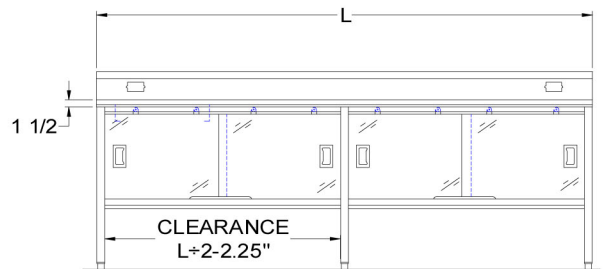
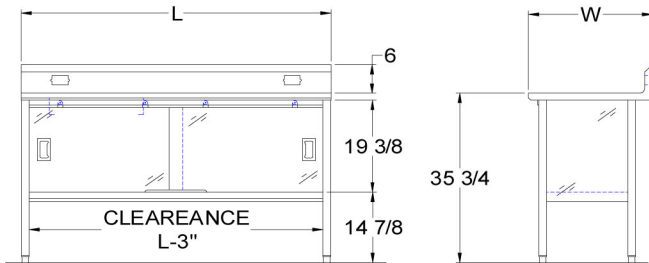
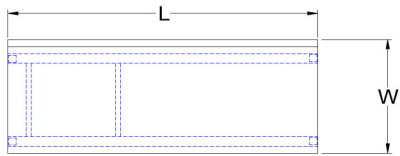
	MODEL #	Qty
CASTERS		
OVERSHELVES		
POT RACK		
SINKS		
INTERMEDIATE SHELF		
S/S BUN PAN RACK		



R.W. Rogers Company
610 S. Kirk Rd., St. Charles, IL 60174
Phone: 630-377-9033 * Fax: 630-377-2073
<http://www.rwrogerscompany.com>



DETAILED SPECIFICATIONS



Shipped Welded Set-Up

Units 7 ft. and larger are furnished with six legs.

All dimensions are typical.

Tolerance +/- .500".

Finished size of undershelf.

Shelf length = length minus 4.875"

Shelf width = width minus 4.25"

16 GAUGE TOP

L	24" WIDE	WT.	30" WIDE	WT.
48	180-31	200	180-36	214
60	180-32	228	180-37	246
72	180-33	258	180-38	280
84	180-22A	295	180-38A	319
96	180-34	332	180-39	358
108	180-34A	364	180-39A	391
120	180-35	395	180-40	424



R.W. Rogers Company

610 S. Kirk Rd., St. Charles, IL 60174
Phone: 630-377-9033 * Fax: 630-377-2073
<http://www.rwrogerscompany.com>

