

# "S14RG" Stainless Steel Top Tables with Risers

w/ 14 Gauge Stainless Steel Work Top  
w/ Galvanized Base and Undershef

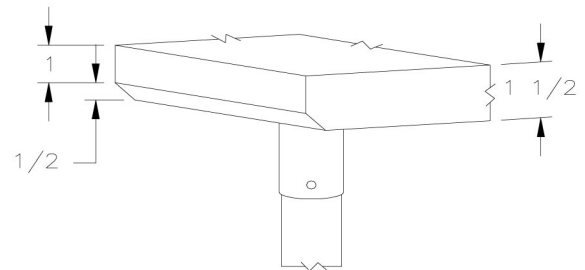


**PREMIUM SERIES**

14 GAUGE TOP w/ UNDERSHELF					
24"WIDE	Qty	30"WIDE	Qty	36"WIDE	Qty
S14086		S14092		-	
S14087		S14093		S14098	
S14088		S14094		S14099	
S14089		S14095		S14100	
S14089A		S14095A		S14100A	
S14090		S14096		S14101	
S14090A		S14096A		S14101A	
S14091		S14097		S14102	

## FEATURES:

- \* 14 Gauge Stainless Steel Top with 6" Riser  
Type 300 stainless steel with # 3 polish, satin finish
- \* Top is **Sound Deadened**
- \* Reinforced with 1"x2" channel running entire length of table
- \* 1 1/2" **Stallion Edge** on front and rear with side edges 90 degree bend down for table line-up
- \* Galvanized Base and Undershef
- \* Undershef is secured in a fixed position, 12" above floor
- \* Adjustable bullet feet
- \* Shipped knocked-down, easy - to - assemble
- \* Optional drawers, casters, pot racks, etc. available
- \* All models are approved by the National Sanitation Foundation and the U.S. Department of Agriculture.



STALLION  
SAFETY  
EDGE

## CONSTRUCTION:

Top: Stainless Steel Tops are TIG welded, Exposed welds are polished to match adjacent surface

## MATERIAL:

Top: 14 gauge stainless Steel  
Type 300 stainless steel with # 3 polish, satin finish

Shelf: 18 gauge Galvanized Steel  
\*\* 6 ft. table only, 16 gauge galvanized steel

Legs: 1 5/8" Round O.D., 16 gauge tubular galvanized steel

Gussets: Galvanized Steel

Feet: 1" adjustable galvanized bullet feet

## OPTIONAL ACCESSORIES

	MODEL #	Qty
DRAWER		
DRAWER LOCK		
ADJUSTABLE SHELF		
CASTERS		
OVERSHELVES		
SINKS		
POT RACK		
WELDED SET-UP		

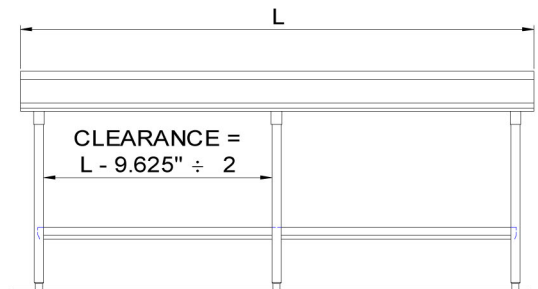
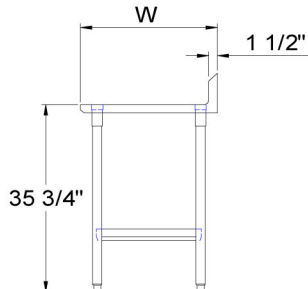
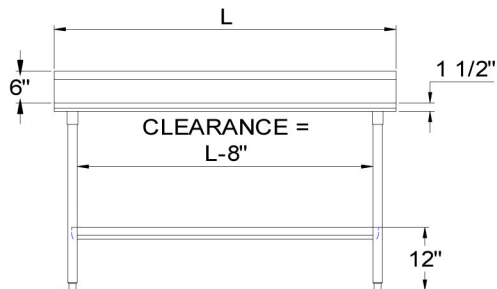
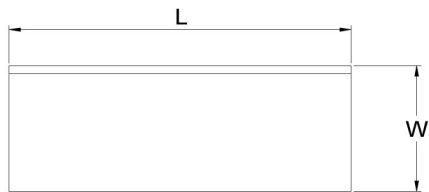


**R.W.Rogers Company**

610 S. Kirk Rd., St. Charles, IL 60174  
Phone: 630-377-9033 \* Fax: 630-377-2073  
<http://www.rwrogerscompany.com>



# DETAILED SPECIFICATIONS



All units ship unassembled for reduced shipping cost.

Units 7 ft. and larger are furnished with six legs.

All dimensions are typical.

Tolerance +/- .500".

Finished size of undershelf.

Shelf length = length minus 4.875"

Shelf width = width minus 4.25"

## 14 GAUGE TOP & UNDERSHELF

L	24" WIDE	WT.	30" WIDE	WT.	36" WIDE	WT.
36	S14086	62	S14092	70	-	-
48	S14087	77	S14093	88	S14098	93
60	S14088	92	S14094	106	S14099	109
72	S14089	96	S14095	131	S14100	138
84	S14089A	121	S14095A	149	S14100A	157
96	S14090	146	S14096	167	S14101	176
108	S14090A	161	S14096A	185	S14101A	195
120	S14091	176	S14097	203	S14102	214



**R.W. Rogers Company**  
 610 S. Kirk Rd., St. Charles, IL 60174  
 Phone: 630-377-9033 \* Fax: 630-377-2073  
<http://www.rwrogerscompany.com>

