

"TC-6" Stainless Steel Cutting Tables

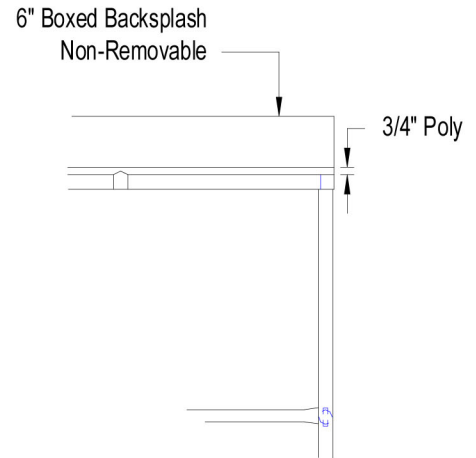
w/ 3/4" High Density Polyethylene
w/ 6" Boxed Backsplash Non-Removable
w/ Stainless Steel Base and Bracing



3/4" POLY TOP w/ STAINLESS STEEL BASE and BRACING					
24"WIDE	Qty	30"WIDE	Qty	36"WIDE	Qty
TC092		TC098		TC104	
TC093		TC099		TC105	
TC094		TC100		TC106	
TC095		TC0101		TC107	
TC095A		TC101A		TC107A	
TC096		TC102		TC108	
TC096A		TC102A		TC108A	
TC097		TC103		TC109	

FEATURES:

- * 3/4" thick **High Density Polyethylene Top**, sectioned per NSF regulation also available with 1/2" Or 1" thick High Density Polyethylene and 1 1/2" thick Hard Rock Maple Top, top style "SCT" flat top
- * One piece High Density Polyethylene Top available at no extra charge must specify
- * Top is held in place by welded clips, removable for ease in cleaning
- * Stainless Steel Base, Bracing and **6" Boxed Backsplash Non-Removable** Type 300 stainless steel with # 3 polish, satin finish
- * Adjustable bullet feet
- * Shipped Standard **Welded Set-Up**, available knocked-down must specify
- * Optional drawers, casters, pot racks, etc. available
- * All models are approved by the National Sanitation Foundation and the U.S. Department of Agriculture.



CONSTRUCTION:

- * Stainless Steel Bases are TIG welded
- Exposed welds are polished to match adjacent surface

MATERIAL:

Top: High Density Polyethylene
Frame: 1 1/2" Square O.D. 18 gauge type 300 tubular stainless steel # 3 polish, satin finish
Bracing: 1 1/4" Round O.D. 18 gauge type 300 tubular stainless steel # 3 polish, satin finish
Legs: 1 5/8" Round O.D., 16 gauge type 300 tubular stainless steel # 3 polish, satin finish
Backsplash: 16 gauge type 300 stainless steel, # 3 polish, satin finish
Feet: 1" adjustable stainless steel bullet feet

OPTIONAL ACCESSORIES

	MODEL #	Qty
DRAWER		
DRAWER LOCK		
CASTERS		
LOWER SHELVES		
MEAT BOAT RACK		
PAPER HOLDER		
K.D. easy - to - assemble		

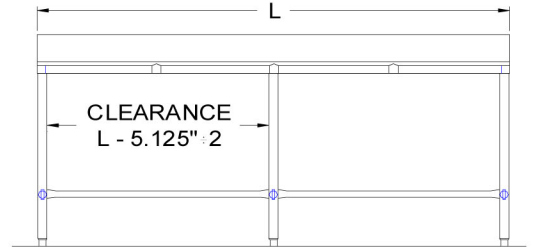
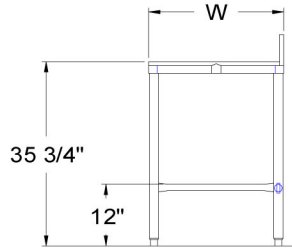
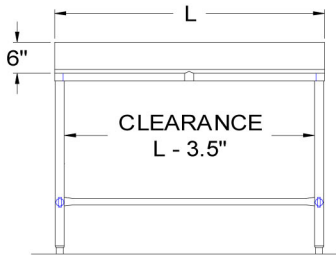
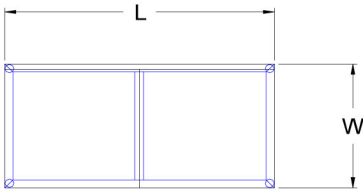


R.W. Rogers Company

610 S. Kirk Rd., St. Charles, IL 60174
Phone: 630-377-9033 * Fax: 630-377-2073
<http://www.rwrogerscompany.com>



DETAILED SPECIFICATIONS



Shipped Standard Welded Set-Up
 Units 7 ft. and larger are furnished with six legs.
 All dimensions are typical.
 Tolerance +/- .500".

3/4" HIGH DENSITY POLYETHYLENE TOP & BRACING

L	24" WIDE	WT.	30" WIDE	WT.	36" WIDE	WT.
36	TC092	57	TC098	64	TC104	71
48	TC093	70	TC099	81	TC105	90
60	TC094	80	TC100	99	TC106	106
72	TC095	98	TC101	115	TC107	128
84	TC095A	113	TC101A	132	TC107A	150
96	TC096	127	TC102	149	TC108	172
108	TC096A	143	TC102A	164	TC108A	186
120	TC097	158	TC103	178	TC109	199



R.W. Rogers Company
 610 S. Kirk Rd., St. Charles, IL 60174
 Phone: 630-377-9033 * Fax: 630-377-2073
<http://www.rwrogerscompany.com>

